

SIGVARIS
GROUP

PRODUCT CATALOGS

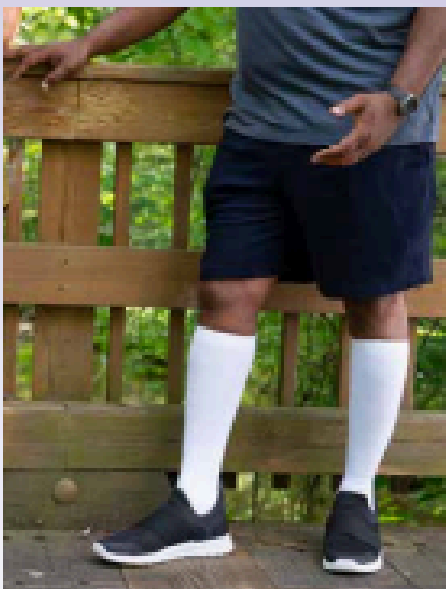
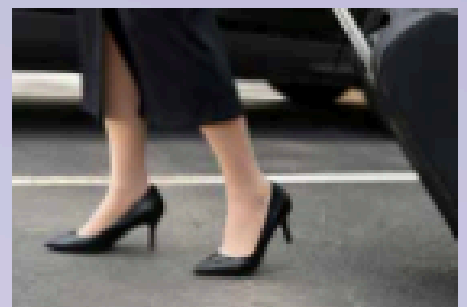
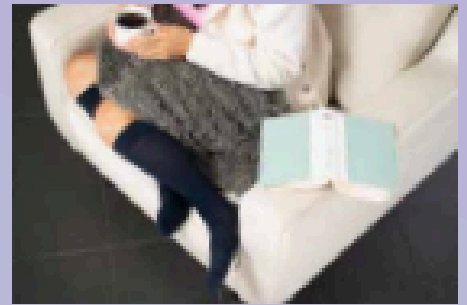


BY LEG REVIVAL CLINIC

sigvaris

5 reasons patients love Sigvaris products

- 1. Great Fit:** Our PFS2 sizing system was designed to fit the broadest range of patients, providing accurate compression and exceptional comfort.
- 2. Easy to Put On:** Sigvaris Medical hosiery glides on easier than other compression brands because we use double-covered spandex inlay yarns.
- 3. Easy to Launder:** Products are machine washable and machine dryable. No need to air dry!
- 4. Six Month Guarantee:** SIGVARIS GROUP guarantees the compression of our Medical products for six months, even when machine washed and dried.
- 5. Color and Material Choices:** More choices of colors, patterns and even premium natural fibers like Sea Island Cotton, Linen, and Merino Wool than any other medical compression brand.



Content**Page**

	Content	Page
Select According to Various Situations	SYMPTOMS	5
	LIFESTYLE / OCCUPATION	6
	MEDICAL CONDITIONS	7
	PRE AND POST TREATMENT/PROCEDURE CARE	8
	SOCK MATERIALS AND STYLES	9
Select According to Sock Preference	Cotton 230	10
	Opaque 860 <i>for women</i>	11
	Opaque 860 <i>for men</i>	12
	Sea Island Cotton 220	13
	Linen 250	14
	Medium Sheer 750 <i>for women</i>	15
	Microfiber 820 <i>for men</i>	16
	Microfiber Patterns 830	17
	Soft Opaque 840 <i>for women</i>	18
	Cushioned Cotton 360	19
	High Tech 412	20
	Thermoregulating Wool 422	21
	Performance Sleeves 412V	22
	Flow Tech 432	23

Find the Perfect Compression Socks for Your Needs

At **Leg Revival Clinic**, we understand that everyone has unique needs and experiences. That's why we've carefully curated a selection of compression socks tailored to different situations, including specific symptoms, lifestyles, medical conditions, and pre- and post-treatment care. Additionally, our range of materials and styles ensures comfort and effectiveness, no matter your preferences.

Discover the ideal socks that support your health and enhance your daily life. Let us help you make the best choice for your journey to better leg health.



SYMPTOM



Symptom	Recommended Sock
Pain, Swelling, Heaviness, Throbbing, Tiredness, and Other Discomforts	All sock types are suitable
Sweating and Heat Sensitivity when Wearing Compression Socks	<ul style="list-style-type: none"> • Cushioned Cotton 360 (See Page 19) • Thermoregulating Wool 422 (See Page 21) • Motion Flow Tech 432 (See Page 23) • High Tech 412 (See Page 20)
Sores or Skin Ulcers	We recommend seeing a doctor immediately for further evaluation and care. Purchasing may not be advisable at this time.
Skin Texture Changes (Rashes, Hardness, Leathery or Shiny Skin)	All sock types are suitable; however, we recommend consulting a doctor immediately for a proper evaluation.
Severe Swelling-Related Skin Changes	<ul style="list-style-type: none"> • Opaque 860 (See Page 11-12) • Cotton 230 (See Page 10) • Microfiber 820 (See Page 16) • Soft Opaque 840 (See Page 18) <p>However, we recommend consulting a doctor immediately for a proper evaluation</p>
Mild to Moderate Swelling	<ul style="list-style-type: none"> • Opaque 860 (See Page 11-12) • Cotton 230 (See Page 10) • Microfiber 820 (See Page 16) <p>However, we recommend consulting a doctor immediately for a proper evaluation</p>
Skin Color Changes (Brown, Reddish, Dark, Bluish, White Patches) without Swelling	All sock types are suitable; however, we recommend consulting a doctor immediately for a proper evaluation.
Sensitive Skin or Itchiness	<ul style="list-style-type: none"> • Cotton 230 (See Page 10) • Linen 250 (See Page 14) • Cushioned Cotton 360 (See Page 19) • Sea Island Cotton 220 (See Page 13)
Sock Rolling or Falling Down	<p>Recommended Sock to Wear (with Grip Top)</p> <ul style="list-style-type: none"> • Cotton 230 (See Page 10) • Opaque 860 (See Page 11-12) • Microfiber 820 (See Page 16) • Soft Opaque 840 (See Page 18)

LIFESTYLE / OCCUPATION

Lifestyle / Occupation	Recommended Sock
Formal	<ul style="list-style-type: none"> • Cotton 230 (See Page 10) • Linen 250 (See Page 14) • Microfiber 820 (See Page 16) • Soft Opaque 840 (See Page 18)
Standing or sitting long hours	<ul style="list-style-type: none"> • Cotton 230 (See Page 10) • Microfiber 820 (See Page 16) • Soft Opaque 840 (See Page 18)
Everyday wear, work	<ul style="list-style-type: none"> • Linen 250 (See Page 14) • Microfiber Patterns 830 (See Page 17) • Microfiber 820 (See Page 16) • Soft Opaque 840 (See Page 18) <p>You are also welcome to select any other sock style that fits your preferences!</p>
Nurses, doctors	<ul style="list-style-type: none"> • High Tech 412 (See Page 20) • Motion Flow Tech 432 (See Page 23) • Microfiber Patterns 830 (See Page 17)
Travel	<ul style="list-style-type: none"> • Opaque 860 (See Page 11-12) • Cotton 230 (See Page 10) • Motion Flow Tech 432 (See Page 23)
Sport	<ul style="list-style-type: none"> • High Tech 412 (See Page 20) • Motion Flow Tech 432 (See Page 23)
Outdoor activities	<ul style="list-style-type: none"> • Thermoregulating Wool 422 (See Page 21)
Maternity/Pregnancy	<ul style="list-style-type: none"> • Cotton 230 (See Page 10) • Soft Opaque 840 - Maternity Pantyhose Style (See Page 18) • Microfiber Patterns 830 (See Page 17) <p>We recommend choosing socks in either Calf or Thigh-High styles, depending on your preference and comfort needs.</p>

MEDICAL CONDITIONS

Medical Conditions	Recommended Sock
Prevention for Family History of Varicose or Spider Veins	<ul style="list-style-type: none"> • Cotton 230 (See Page 10) • Medium Sheer 750 (See Page 15) • Soft Opaque 840 (See Page 18) • Motion Flow Tech 432 (See Page 23)
Chronic Venous Insufficiency (CVI), Chronic Venous Disease (CVD), Deep Vein Thrombosis (DVT)	<ul style="list-style-type: none"> • Cotton 230 (See Page 10) • Soft Opaque 840 (See Page 18) • Motion Flow Tech 432 (See Page 23)
Diabetes	<ul style="list-style-type: none"> • Cushioned Cotton 360 (See Page 19) • Linen 250 (See Page 14) • Cotton 230 (See Page 10) • Motion Flow Tech 432 (See Page 23)
Pregnancy-related Diabetes	<ul style="list-style-type: none"> • Cushioned Cotton 360 (See Page 19) • Linen 250 (See Page 14) • Cotton 230 (See Page 10) • Motion Flow Tech 432 (See Page 23) • Soft Opaque 840 - Maternity Pantyhose Style (See Page 18) <p>We recommend choosing socks in either Calf or Thigh-High styles, depending on your preference and comfort needs.</p>

PRE AND POST TREATMENT/PROCEDURE CARE

Scenario	Recommended Sock
Pre-Treatment Care for Vein Procedures or Surgery	<ul style="list-style-type: none"> • Soft Opaque 840 (See Page 18) • Opaque 860 (See Page 12) • Cotton 230 (See Page 10) <p>You are also welcome to select any other sock style that fits your preferences!</p>
Post-Treatment Care for Vein Procedures	<p>Immediately After Treatment:</p> <ul style="list-style-type: none"> • Opaque 860 (See Page 12) • Cotton 230 (See Page 10) • Soft Opaque 840 (See Page 18) <p>For Several Weeks After Treatment:</p> <ul style="list-style-type: none"> • You may choose from any of the available sock types based on your preference
Pre and Post Treatment Care for Sclerotherapy (SP) and Varicose Veins (VV)	<ul style="list-style-type: none"> • Soft Opaque 840 (See Page 18) • Cotton 230 (See Page 10) • Opaque 860 (See Page 12) • Microfiber 820 (See Page 16)

SOCK MATERIALS AND STYLES

Materials and Styles	Recommended Sock
Thermoregulated and moisture-wicking	<ul style="list-style-type: none"> • Linen 250 (See Page 14) • Thermoregulating Wool 422 (See Page 21) • Microfiber Patterns 830 (See Page 17)
Soft material	<ul style="list-style-type: none"> • Soft Opaque 840 (See Page 18) • Linen 250 (See Page 14) • Microfiber Patterns 830 (See Page 17)
Funky colors	<ul style="list-style-type: none"> • Microfiber Patterns 830 (See Page 17)
Cotton	<ul style="list-style-type: none"> • Cotton 230 (See Page 10)
Wool	<ul style="list-style-type: none"> • Thermoregulating Wool 422 (See Page 21)
Linen	<ul style="list-style-type: none"> • Linen 250 (See Page 14)
Open toe	<ul style="list-style-type: none"> • Cotton 230 (See Page 10) • Opaque 860 (See Page 12) • Soft Opaque 840 (See Page 18)
Footless	<ul style="list-style-type: none"> • Performance Sleeves (See Page 22)

sigvaris

Essential COTTON 230

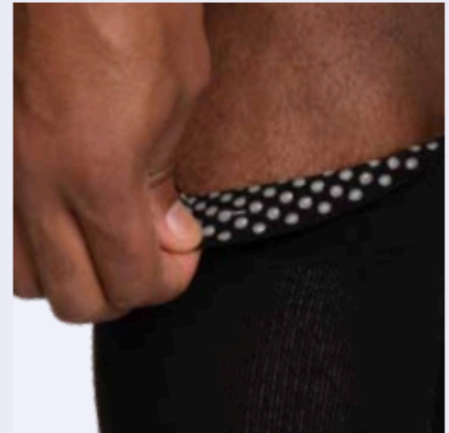
Essential Cotton combines a classic ribbed design and all-day cotton comfort that is ideal for sensitive skin.

Compression levels
20–30mmHg • 30–40mmHg

- Features and benefits**
- Supima® cotton for highest level of comfort and breathability
 - Ideal for sensitive skin and allergies
 - Double-covered inlay yarns provide comfort and allow product to easily glide on and off

- Fiber content**
- 50% Nylon, 25% Spandex, 25% Supima Cotton (content may vary slightly by style)
 - Non-latex

- Best suited for**
- Containment of various types of edema including venous edema, phlebolymphe­dema, and early stages of lymphedema
 - Ideal for dress or casual shoes
 - Ideal for long-distance travel



232NMLM66
20–30mmHg, Closed Toe Thigh
Medium Long in Light Beige

Silicone dotted grip-top band
available for calf and thigh

Styles **Colors**

	White 00	Navy 10	Light Beige 66	Black 99
Calf (C)	Closed Toe	Closed Toe	Closed Toe Open Toe	Closed Toe
Calf w/grip-top (C/S)** Silicone band grip-top	Not Available	Not Available	Closed Toe*	Closed Toe**
Thigh w/grip-top (N) Sensinnov band grip-top	Not Available	Not Available	Closed Toe Open Toe	Closed Toe

* 20–30mmHg only
** 30–40mmHg calf with grip-top only available in Black, 30–40mmHg extra large calf only available in Black with grip-top

Essential

OPAQUE 860

Essential Opaque offers our broadest range of sizes and styles, making it your go-to choice for everyday hosiery.

(For Men's Essential Opaque, see page 10)

Compression levels

20–30mmHg • 30–40mmHg

Features and benefits

- Double-covered inlay yarns provide comfort and allow product to easily glide on and off
- Cotton-lined gusset for pantyhose styles
- The Pantyhose Plus style is a great option during pregnancy

Fiber content

- 64% Nylon, 36% Spandex (content may vary slightly by style)
- Non-latex

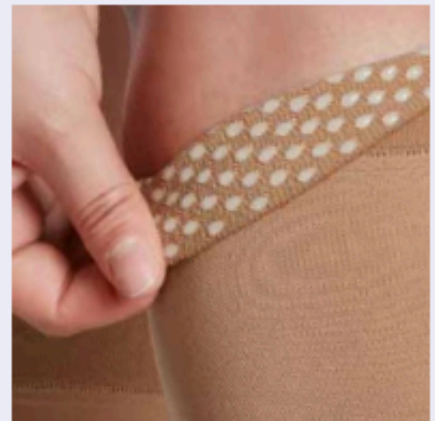
Best suited for

- Containment of various types of edema including venous edema, phlebolympheidema, and early stages of lymphedema
- Post-vein treatment including thermal and non-thermal techniques
- Patients looking for petite-sized and plus-sized options



862CSLW99/S

20–30mmHg, Closed Toe Calf w/grip-top
Small Leg in Black



Silicone dotted grip-top band
available for calf and thigh

Women's Styles (for Men's, see page 11)

Colors

Closed Toe = ●
Open Toe = ○

Honey 33 Golden 36 Light Beige 66 Black 99

	Honey 33	Golden 36	Light Beige 66	Black 99
Women's Calf (C)	Closed Toe	Closed Toe	Open Toe	Closed Toe Open Toe
Women's Calf Petite Sizes (C) Only available in 20–30mmHg, not available with silicone band grip-top	Closed Toe	Closed Toe	Not Available	Closed Toe
Women's Calf w/grip-top (C/S) Silicone band grip-top	Not Available	Not Available	Closed Toe Open Toe	Closed Toe Open Toe
Women's Calf Plus w/grip-top (C/P) Only available with silicone band grip-top	Not Available	Not Available	Closed Toe Open Toe	Closed Toe Open Toe
Women's Thigh w/grip-top (N) Silicone band grip-top*	Closed Toe	Closed Toe	Open Toe	Closed Toe Open Toe
Women's Thigh w/grip-top Petite (N)** Only available in 20–30mmHg	Closed Toe	Closed Toe	Not Available	Closed Toe
Women's Pantyhose (P) Not available in XS or XL sizes	Closed Toe	Closed Toe	Not Available	Closed Toe
Women's Pantyhose Petite (P)** Only available in 20–30mmHg	Closed Toe	Closed Toe	Not Available	Closed Toe
Women's Pantyhose Plus (P/P) Not available in XS or XL sizes	Not Available	Not Available	Closed Toe	Closed Toe
Thigh w/Waist Attachment (W)** Indicate leg LEFT (L) or RIGHT (R)	Not Available	Not Available	Open Toe	Not Available

* Women's Thigh w/grip-top (N) and Open Toe Thigh w/grip-top (N) sizes XS and XL are only available in Light Beige and Black

** Thigh w/Waist Attachment not available in XS or XL sizes. Petite sizes not available in L and XL sizes.

Essential OPAQUE 860

Essential Opaque offers durability you can trust in our most extensive size range, making it your go-to choice for everyday socks and stockings.

(For Women's Essential Opaque, see page 8)

Compression levels

20–30mmHg • 30–40mmHg

Features and benefits

- Double-covered inlay yarns provide comfort and allow product to easily glide on and off
- Men's calf and thigh products feature ribbed fabric; open toe products are a smooth hosiery fabric
- Flat, low friction toe seam

Fiber content

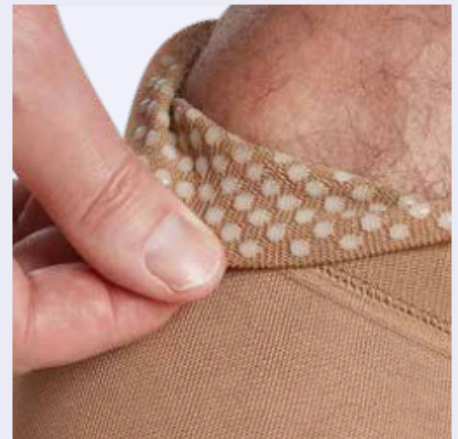
- 64% Nylon, 36% Spandex (content may vary slightly by style)
- Non-latex

Best suited for

- Containment of various types of edema including venous edema, phlebolympheidema, and early stages of lymphedema
- Post-vein treatment including thermal and non-thermal techniques
- Patients looking for plus-sized options



862CMLM99
20–30mmHg, Closed Toe Calf
Medium Long in Black



Silicone dotted grip-top band
available for calf and thigh

Men's Styles *(for Women's, see page 9)*

Colors

Closed Toe = ●
Open Toe = ○

Light
Beige
66

Black
99

	Light Beige 66	Black 99
Men's Calf (C)	Closed Toe Open Toe	Closed Toe Open Toe
Men's Calf w/grip-top (C/S) Silicone band grip-top	Closed Toe Open Toe	Closed Toe Open Toe
Men's Calf Plus w/grip-top (C/P) Only available with silicone band grip-top	Closed Toe Open Toe	Closed Toe Open Toe
Men's Thigh w/grip-top (N) Silicone band grip-top	Closed Toe Open Toe	Closed Toe Open Toe
Thigh w/Waist Attachment (W)* Indicate leg LEFT (/L) or RIGHT (/R)	Open Toe	Not Available

*Thigh w/Waist Attachment not available in XS or XL sizes.

sigvaris

Style

SEA ISLAND COTTON 220

Style Sea Island Cotton socks are made with the world's rarest cotton, ensuring a luxurious feel that is as soft as cashmere.

Compression levels

20–30mmHg (also available in 15–20mmHg, see p. 62)

Features and benefits

- Knitted with the world's rarest cotton for a soft, luxurious feel
- Ideal for sensitive skin
- Double-covered inlay yarns provide comfort and allow product to easily glide on and off

Fiber content

- 43% Sea Island Cotton, 39% Nylon, 11% Spandex, 7% Supima Cotton
- Non-latex

Best suited for

- Management of early stages of Chronic Venous Disease (CVD)
- Patients who prefer natural fibers for everyday wear
- Long-distance travel



222CSLW10

20–30mmHg, Closed Toe Calf Small Long in Navy

222CLLW99

20–30mmHg, Closed Toe Calf Large Long in Black

Style

Colors

Closed Toe = ●

Navy
10

Black
99



Calf (C)

Closed Toe

Closed Toe

sigvaris

Style

LINEN 250

Our stylish Linen socks in four gorgeous colors will make your legs look and feel great!

Compression levels

20–30mmHg

Features and benefits

- Lightweight and breathable for all day comfort
- Natural fibers are ideal for sensitive skin
- Crafted from fibers of the flax plant, our linen line is sustainable and stylish

Fiber content

- 48% Cotton, 23% Linen, 22% Nylon and 7% Spandex
- Non-latex

Best suited for

- Management of early stages of Chronic Venous Disease (CVD)
- Patients who prefer natural fibers for everyday wear
- Patients who prefer fashionable color options
- Long-distance travel



252CMLM205
20–30mmHg, Closed Toe Calf
Medium Long in Light Grey



252CSLW201
20–30mmHg, Closed Toe Calf
Small Long in Denim

Style

Colors

Closed Toe = ●

Brown
111

Denim
201

Light Grey
205

Lavender
207



	Brown 111	Denim 201	Light Grey 205	Lavender 207
Women's Calf (C)	Not Available	Closed Toe	Closed Toe	Closed Toe
Men's Calf (C)	Closed Toe	Not Available	Closed Toe	Not Available

Style

MEDIUM SHEER 750

Thanks to the durability of Style Medium Sheer, you will have the confidence to wear sheer hosiery every day.

Compression levels

20–30mmHg

Features and benefits

- Fashionable, durable, medium sheer hosiery for everyday wear
- Double-covered inlay yarns provide comfort and allow product to easily glide on and off
- Cotton-lined gusset for pantyhose styles

Fiber content

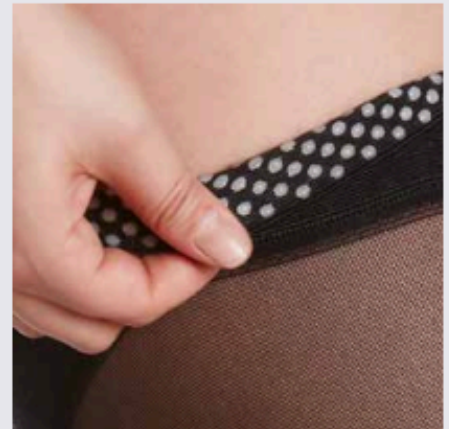
- 68% Nylon, 32% Spandex (content may vary slightly by style)
- Non-latex

Best suited for

- Management of early stages of Chronic Venous Disease (CVD)
- Pre- and post-vein treatment
- Daily wear for business or casual
- Active professionals needing a durable sheer



752CLSW33
20–30mmHg, Closed Toe Calf
Large Short in Honey



Silicone dotted grip-top band
available for thigh

Styles Colors

	Honey 33	Nightshade 94	Black 99
Calf (C)	Closed Toe	Closed Toe	Closed Toe
Thigh w/grip-top (N) Silicone band grip-top	Closed Toe	Closed Toe	Closed Toe
Pantyhose (P)	Closed Toe	Closed Toe	Closed Toe

sigvaris
MEN

Style

MICROFIBER 820

Style Microfiber socks offer microfiber softness for your professional and everyday wear.

Compression levels

15–20mmHg · 20–30mmHg
30–40mmHg

Features and benefits

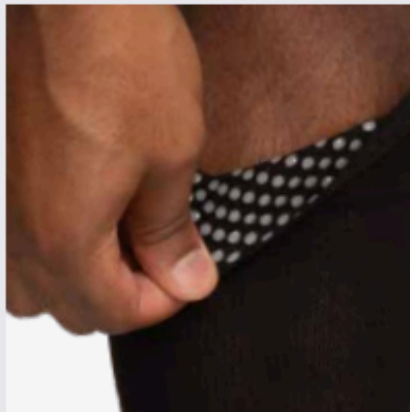
- 100% microfiber against the skin for an ultra-soft feel
- Excellent breathability and moisture management for added comfort
- Double-covered inlay yarns provide comfort and allow product to easily glide on and off

Fiber content

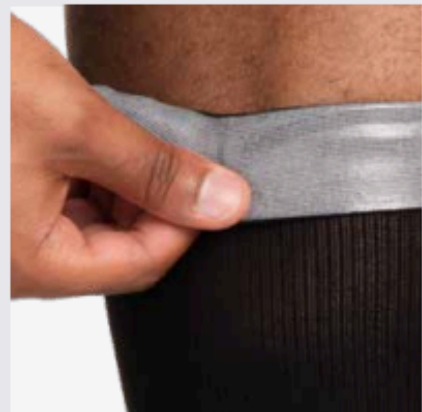
- 87% Nylon, 13% Spandex (Calf)
- 68% Nylon, 32% Spandex (Thigh)
- Non-latex

Best suited for

- Management of early stages of Chronic Venous Disease (CVD)
- Patients who prefer fashionable options
- Extended foot sizes for men
- Long-distance travel



Silicone dotted grip-top band
available for calf



Sensinnov grip-top band
available for thigh

Styles Colors

	Tan Khaki 32	Steel Grey 93***	Black 99
Calf (C)	Closed Toe	Closed Toe	Closed Toe
Calf w/grip-top (C/S)** Silicone band grip-top	Closed Toe	Not Available	Closed Toe
Thigh w/grip-top (N)** Sensinnov band grip-top	Closed Toe	Not Available	Closed Toe

** Calf w/grip-top and Thigh w/grip-top not available in 15–20mmHg

*** Steel Grey color only available in 15–20mmHg and 20–30mmHg

sigvaris

Style

MICROFIBER PATTERNS 830

Style Microfiber Patterns socks combine ultimate comfort with a variety of fashionable colors and designs to spice up your wardrobe.

Compression levels

20-30mmHg (also available in 15-20mmHg, see p. 61)

Features and benefits

- 100% microfiber against the skin for an ultra-soft feel
- Fashionable, durable socks for everyday wear
- Double-covered inlay yarns provide comfort and allow product to easily glide on and off

Fiber content

- 87% Nylon, 13% Spandex (content can vary slightly by style)
- Non-latex

Best suited for

- Management of early stages of Chronic Venous Disease (CVD)
- Patients who prefer fashionable options
- Long-distance travel



832CMSW02
20-30mmHg, Closed Toe Calf Medium Short in Mariner Stripe



832CMLM91
20-30mmHg, Closed Toe Calf Medium Long in Graphite Chevron

Style	Colors					
Closed Toe = ●	Mariner Stripe 02	Cranberry Chevron 05	Pink Stripe 15	Graphite Stripe 17	Onyx Stripe 19	Graphite Heather 27
Women's Calf (C)	Closed Toe	Closed Toe	Closed Toe	Not Available	Closed Toe	Closed Toe
Men's Calf (C)	Not Available	Not Available	Not Available	Closed Toe	Closed Toe	Closed Toe

Style	Colors						
Closed Toe = ●	Black Plaid 42	Purple Argyle 46	Graphite Argyle 47	Royal Blue Argyle 48	Wisteria Windows 61	Espresso Windows 89	Graphite Chevron 91
Women's Calf (C)	Not Available	Closed Toe	Closed Toe	Closed Toe	Closed Toe	Not Available	Closed Toe
Men's Calf (C)	Closed Toe	Not Available	Closed Toe	Closed Toe	Not Available	Closed Toe	Closed Toe

Style

SOFT OPAQUE 840

Style Soft Opaque hosiery blends a fashionable opaque look with long-lasting microfiber softness for your professional and everyday wear.

Compression levels

15–20mmHg · 20–30mmHg
30–40mmHg

Features and benefits

- Fashionable opaque hosiery for professional and everyday wear
- Double-covered inlay yarns provide comfort and allow product to easily glide on and off
- Cotton-lined gusset for pantyhose styles

Fiber content

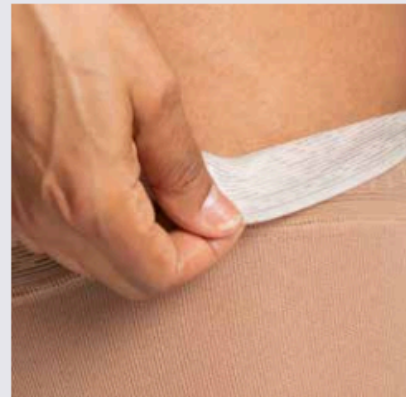
- 74% Nylon, 26% Spandex (content can vary slightly by style)
- Non-latex

Best suited for

- Management of early stages of Chronic Venous Disease (CVD)
- Pre- and post-vein procedure
- Patients who prefer fashionable options
- Pregnancy
- Long distance travel



842CMLW60
20–30mmHg, Closed Toe Calf
Medium Long in Mulberry



Sensinnov grip-top band
available for thigh

Styles	Colors						
	Midnight Blue 09	Chai 35	Pecan 40	Mulberry 60*	Espresso 89*	Graphite 91	Black 99
Calf (C)	Closed Toe	Closed Toe Open Toe	Closed Toe	Closed Toe	Closed Toe	Closed Toe	Closed Toe Open Toe
Calf w/grip-top (C/S)*	Not Available	Not Available	Not Available	Not Available	Not Available	Not Available	Closed Toe
Thigh w/grip-top (N) Sensinnov band grip-top	Closed Toe	Closed Toe Open Toe	Closed Toe	Closed Toe	Closed Toe	Closed Toe	Closed Toe Open Toe
Pantyhose (P)	Closed Toe	Closed Toe Open Toe	Closed Toe	Closed Toe	Closed Toe	Closed Toe	Closed Toe Open Toe
Maternity Pantyhose (M)**	Not Available	Not Available	Not Available	Not Available	Not Available	Not Available	Closed Toe

* 20–30mmHg ONLY

** Maternity styles are only available in 15–20mmHg and 20–30mmHg. They are made to order and shipped in 7–10 business days

sigvaris

Motion

CUSHIONED COTTON 360

Motion Cushioned Cotton is soft and breathable with an extra-padded sole for optimal comfort, and is ideal for sensitive skin.

Compression level

20–30mmHg

Features and benefits

- Supima cotton for highest level of comfort and breathability
- Extra-padded sole, heel, and toe to protect feet
- Flat, low-friction toe seam

Fiber content

- 64% Supima Cotton, 28% Nylon, 8% Spandex
- Non-latex

Best suited for

- Management of early stages of Chronic Venous Disease (CVD)
- People who stand for prolonged periods of time
- Work shoes and boots
- Casual shoes and sports shoes



362CMLM99
20–30mmHg, Closed Toe Calf
Medium Long in Black





362CMLM00
20–30mmHg, Closed Toe Calf
Medium Long in White

Style Colors

Closed Toe = ●

White
00

Black
99

		
Calf (C)	Closed Toe	Closed Toe

sigvaris

Motion

HIGH TECH 412

Motion High Tech delivers optimal comfort where it counts with an anatomically-contoured shape and a cushioned sole.

Compression level
20-30mmHg

Features and benefits

- High-tech fibers for thermal control
- Cushioned footbed, toe, and Achilles tendon zones for optimal comfort
- Additional compression in calf can improve circulation

Fiber content

- 64% Nylon, 17% Polyester, 19% Spandex
- Non-latex

Best suited for

- Management of early stages of Chronic Venous Disease (CVD)
- People who stand on their feet all day
- Walking and everyday activities
- Casual and occupational footwear



412CML59
20-30mmHg, Closed Toe Calf
Medium Large in Red

412CMM62
20-30mmHg, Closed Toe Calf
Medium Medium in Steel Blue

Style	Colors						
Closed Toe = ●	White 00	Blue 50	Lime 54	Pink 56	Red 59	Steel Blue 62	Black 99
Calf (C)	Closed Toe	Closed Toe	Closed Toe	Closed Toe	Closed Toe	Closed Toe	Closed Toe

sigvaris

Motion

THERMOREGULATING WOOL 422

Motion Thermoregulating Wool combines the benefits of natural Merino wool with cushioned soles, making it ideal for wherever the road takes you!

Compression level

20–30mmHg (also available in 15–20mmHg, see p. 69)

Features and benefits

- Merino wool is softer and thinner than regular wool
- Wool fibers naturally help regulate body temperature and transport sweat away from the skin
- Natural properties of wool make these socks odor resistant
- Cushioned, padded soles may prevent blisters

Fiber content

- 67% Fine Merino Wool, 26% Nylon, 7% Spandex
- Non-latex

Best suited for

- Management of symptoms related to Chronic Venous Disease (CVD)
- People who stand on their feet all day
- Work boots, steel-toed shoes, and other occupational footwear
- Adventurers, hikers, campers, craftsman, and gardeners



422CML31
20–30mmHg, Closed Toe Calf
Medium Large in Olive



422CLL12
20–30mmHg, Closed Toe Calf
Large Large in Charcoal

Style

Colors

Closed Toe = ●

Charcoal
12

Olive
31



Calf (C)

Closed Toe

Closed Toe

Performance Sleeves

412V

For women & men

Compression level

20–30mmHg

Features and benefits

- Fabric resists deterioration in salt, chlorine, or fresh water
- Helps reduce lactic acid buildup¹
- Quick drying
- High-visibility reflective transfer

Fiber content

- 75% Nylon, 25% Spandex
- Non-latex

Best suited for

- Running, triathlons, endurance sports, and gym workouts
- Team sports
- Occupational wear



412VM00
20–30mmHg Sleeve Size M in White



412VM50
20–30mmHg Sleeve Size M in Blue



412VS58
20–30mmHg Sleeve Size S in Purple



412VL99
20–30mmHg Sleeve Size L in Black

Style

Calf Sleeve = **O**

White
00

Blue
50

Purple
58*

Black
99



Calf Sleeve (V)	Calf Sleeve	Calf Sleeve	Calf Sleeve	Calf Sleeve
------------------------	--------------------	--------------------	--------------------	--------------------

1. Effect of Compression Stockings on Physiological Responses and Running Performance in Division III Collegiate Cross-Country Runners During a Maximal Treadmill Test. Journal of Strength and Conditioning Research. Volume 28, Number 6, June 2014. Rider, Coughlin, Hew-Butler, Goslin.

* Purple not available in size X

Motion

FLOW TECH 432



Style and Colours

Closed
Toe = ●

Orchid
210

**Cool
Grey**
211

**Deep
Sea**
212

Black
199

Calf (C)	Closed Toe	Closed Toe	Closed Toe	Closed Toe